

A stylized, colorful illustration serves as the background. It features a large, multi-colored circular sun or wheel with segments in shades of blue, green, yellow, orange, and pink. To the left, there are blue clouds and swirling lines. Below the sun, a purple triangle points upwards. At the bottom, a person in an orange shirt and pink skirt stands on a green patterned oval, next to a red bull with yellow horns. A large, striped orange and pink triangle is also present.

Introduction to ALIV[H]E Framework

WNZ – AIDS2018

Action Linking Initiatives on VAW and HIV Everywhere (“ALIV[H]E”) Framework

UNAIDS-commissioned consortium, with Salamander Trust, ATHENA Network, AIDS Legal Network, Project Empower and HEARD

Slides from a WEBINAR 9 November 2017



REFRAMING the hierarchy of evidence: from a pyramid.....

Figure 4: Conventional hierarchy of evidence



The ALIV[H]E framework

WHAT: An Implementation Framework

To support NGOs to strengthen responses, and widen the evidence base on what works, to reduce VAW in the context of HIV.

WHY: Bridging the Gap: from *what* to *how*

Despite the growing body of evidence on the linkages between HIV and VAW, there remains limited practical guidance on *how* to integrate and operationalise this evidence either programmatically or within national policies. There is also limited evidence on how to address VAW in all their diversities.

FOR WHOM: The framework aims to support CBOs and/or NGOs and community members to lead creative and dynamic programmes to address VAW in the context of HIV.

Implementing & Research Partners

Implementing Partner

Kenya

- Better Poverty Eradication Organization (BPEO)

India

- Positive Women's Network (PWN+)

Malawi

- Coalition of Women Living with HIV and AIDS (COWLHA)

South Africa

- Sex Workers Education & Advocacy Taskforce (SWEAT)

South Sudan

- Health Link South Sudan

Zimbabwe

- Her Zimbabwe
- Musasa Project

Research Partner

Kenya

- LVCT Health

India

- International Center for Research on Women (IRCW)

Malawi

- SAsAIDS

South Africa

- AIDS Legal Network (ALN)

South Sudan

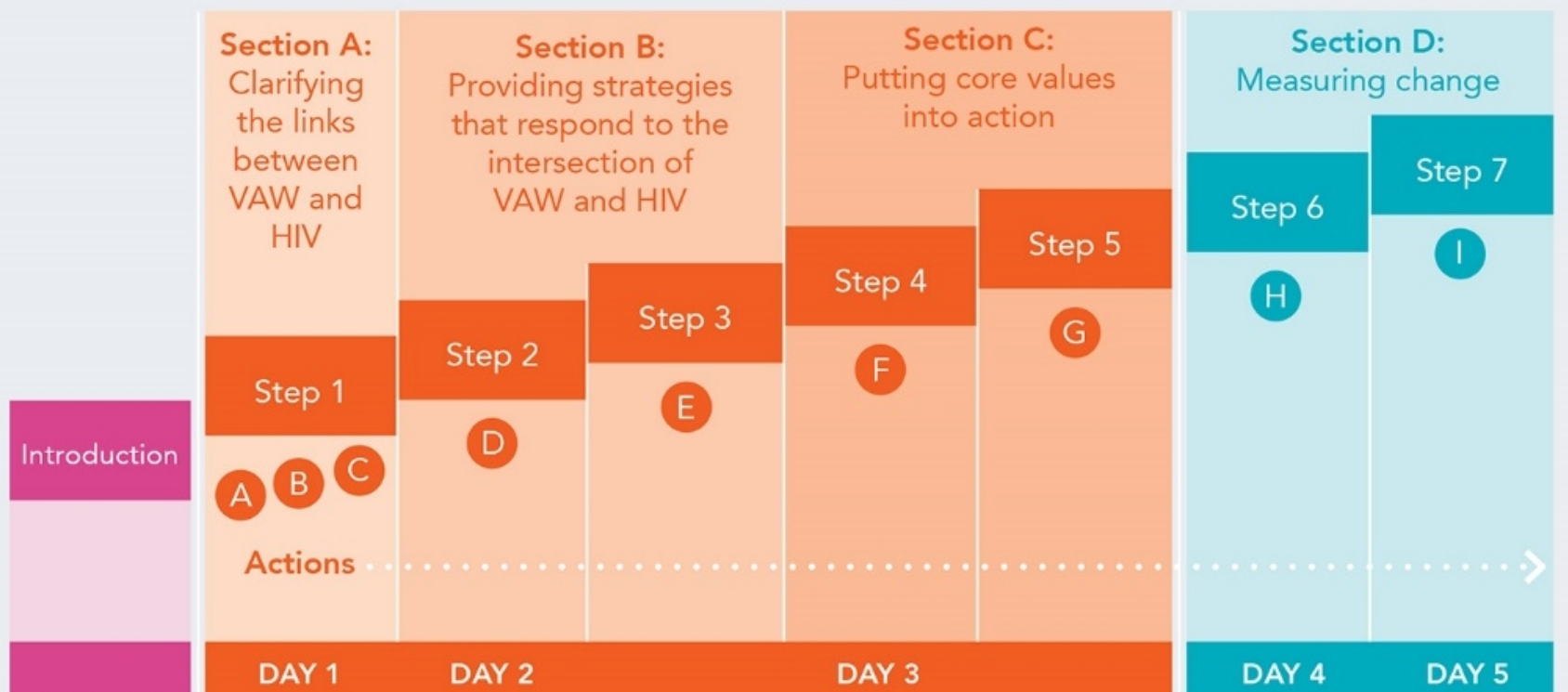
- UNAIDS

Zimbabwe

- Women and Law Southern Africa, Zimbabwe (WLSA)

The ALIV[H]E Framework

Figure 1: ALIV[H]E Framework structure and timeline



Part 1:
Introduction,
core values
and policy
background

Part 2: Links, strategies and action

Part 3: Measuring change

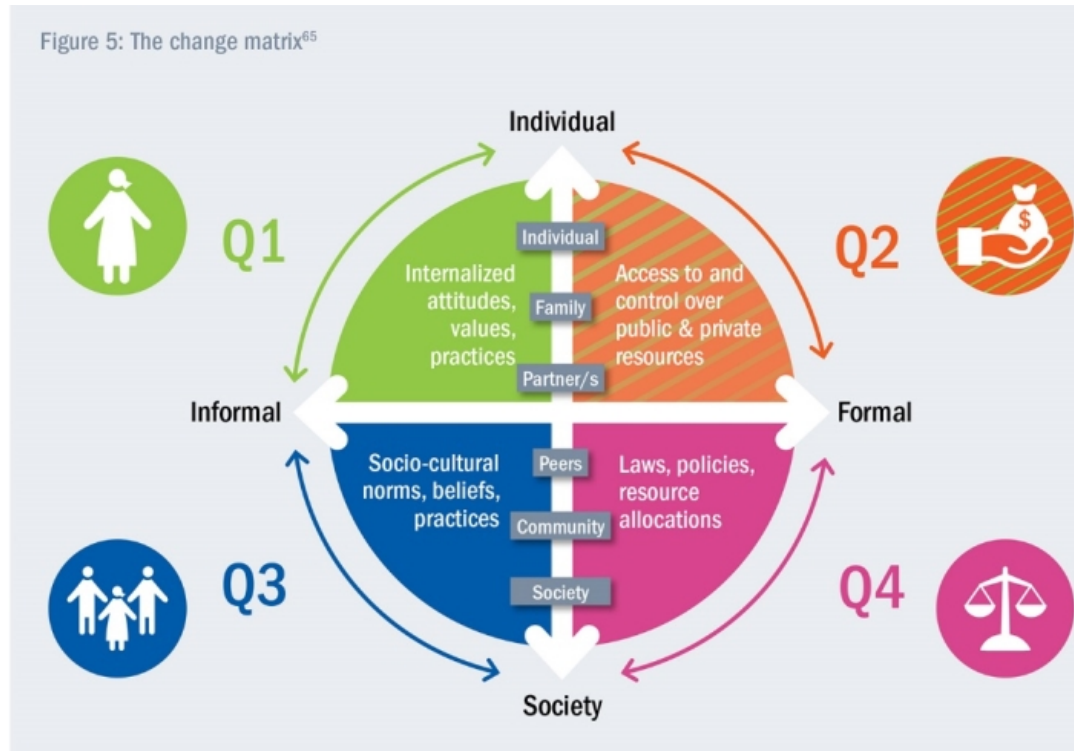
Presented in THREE PARTS: containing Seven Steps and Nine Actions

Core Values of the ALIV[H]E Framework



- ✓ Human Rights
- ✓ Sexual and Reproductive Health and Rights
- ✓ Gender Equity and Equality
- ✓ Respect for diversity
- ✓ Safety
- ✓ Participation
- ✓ Evidence-informed

The ALIV[H]E Quadrants of Change matrix



Where Change Happens: The Quadrants of Change Matrix *(Gender At Work)*

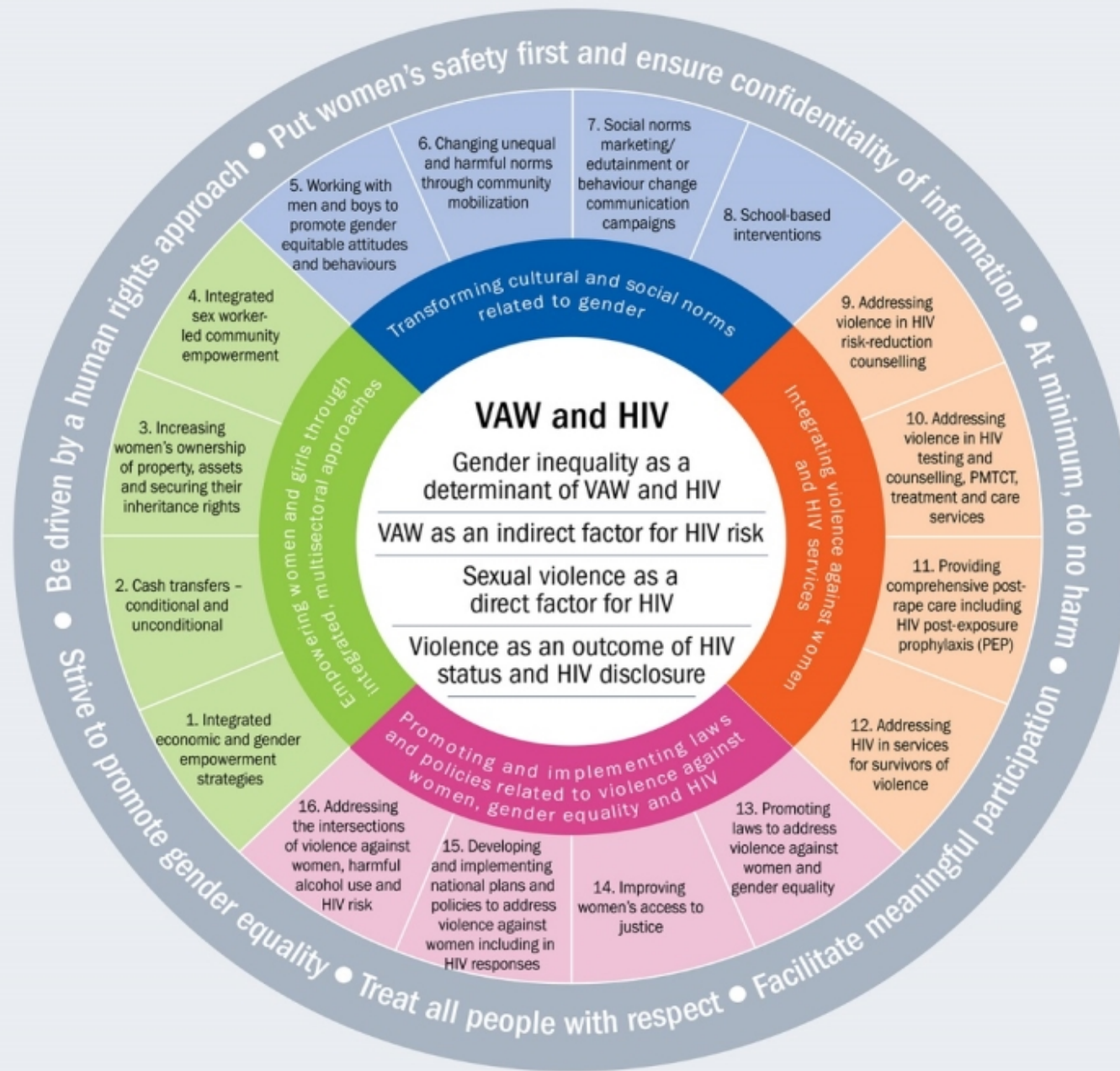
Quadrant 1: Internalised attitudes, values and practices: choice and agency

Quadrant 2: Access to and control over public and private resources

Quadrant 3: Changing socio-cultural norms

Quadrant 4: Promoting and implementing laws and policies

Figure 2: 16 ideas wheel



ALIV[H]E - important supporting resources

- WHO Consolidated guidelines on SRHR (includes guidelines of relevance to VAW)
- Generic Checklist for Community Engagement
- Agenda for Zero Discrimination in Health Care Settings - http://www.unaids.org/sites/default/files/media_asset/2017ZeroDiscriminationHealthCare.pdf
- *Stepping Stones*



Global Reference Group



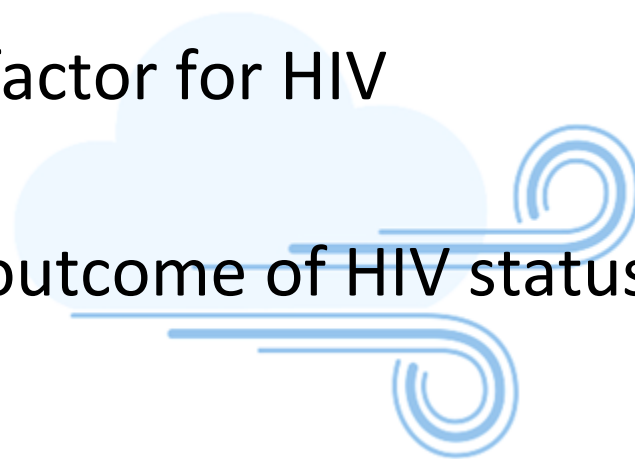
Including Silvia Petretti.....

Phelister Wambui Abdalla,
Kenya Sex Workers Alliance
(KESWA);
Elizabeth Akinyi Mokkonen,
Community Fight Against
GBV and HIV/AIDS (COFAS);
Betty Babirye Kwagala,
TASO;
Clara Banya, International
Community of Women Living
with HIV (ICW) Malawi;
Jennifer Gatsi-Mallet, Namibia
Women's Health Network
(NWHN);
Feli Lalrintluanga;
Steve Letsike;
Inviolata Mbwavi;
Ayu Oktariani, Youth LEAD;
Silvia Petretti, Positively UK;
Arushi Singh;
Martha Tholanah;
Leigh Ann van der Merwe.

Gender, VAW and HIV

WHO pathways:

1. Gender inequality as a common determinant of VAW and HIV,
2. VAW as an indirect factor for increased HIV risk and a barrier to uptake of HIV services, poor treatment adherence and response,
3. Sexual violence as a direct risk factor for HIV transmission,
4. Violence against women as an outcome of HIV status and disclosure.



Gender, VAW and HIV

Examples of application:

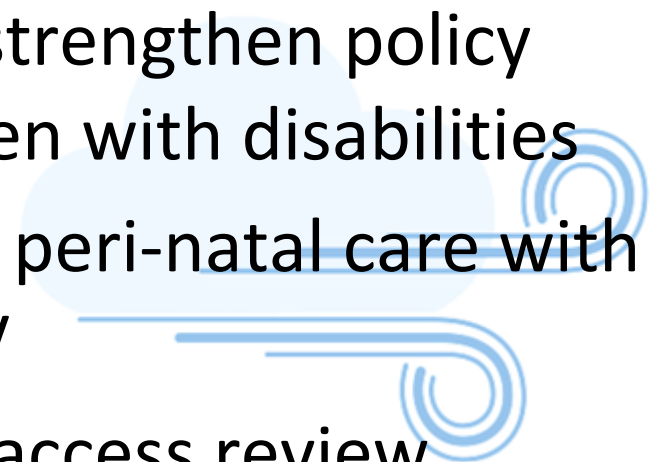
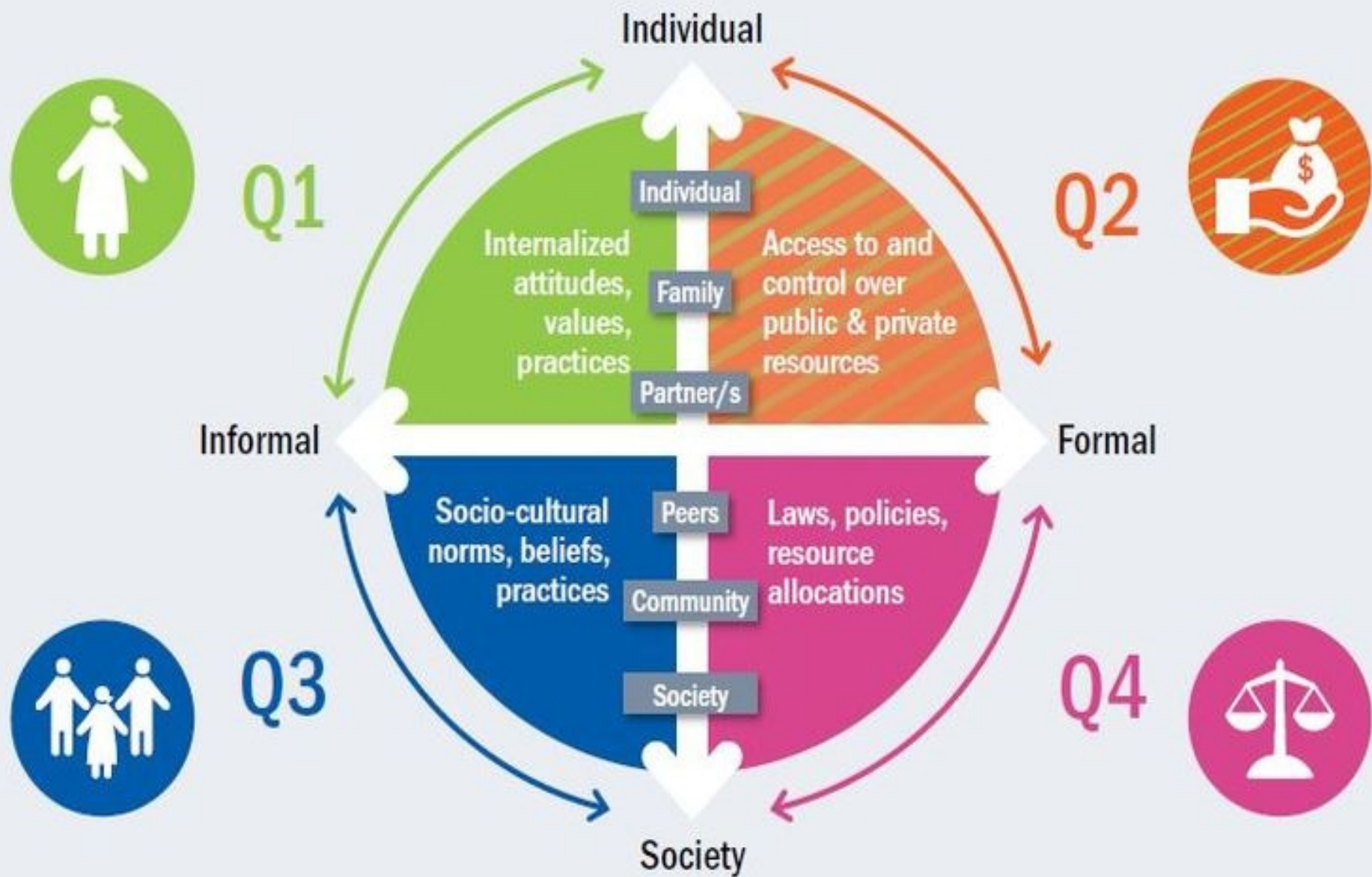
- **India:** using ALIV[H]E as part of the programme
 - **Malawi:** using ALIV[H]E to change by-laws on GBV
 - **MENA** region: empowering women living with and most affected by HIV in Morocco, Algeria, Egypt and Lebanon
 - **Botswana:** using ALIV[H]E to strengthen policy around violence against women with disabilities
 - **UK:** using ALIV[H]E to support peri-natal care with and for women living with HIV
 - **Global:** analysis of treatment access review
- 

Figure 5: The change matrix⁶⁵



Introduction to ALIV[H]E Framework

WNZ – AIDS2018

THANK YOU to all the programme partners
and to Jane Shepherd for the Graphic Design
To access the Framework report and related documents
and webinars click here:

<http://salamandertrust.net/project/research-interlinkages-gbv-hiv-un aids/>

